

Time For

TeknaEVO

Price List

GROWTH

Only 1 in 246 Seko
TeknaEVO pumps
have required diaphragm
replacement in 4 years

Yamatho Supply LLC

e-mail: sales@yamathosupply.com

Phone/fax: 610-365-7928

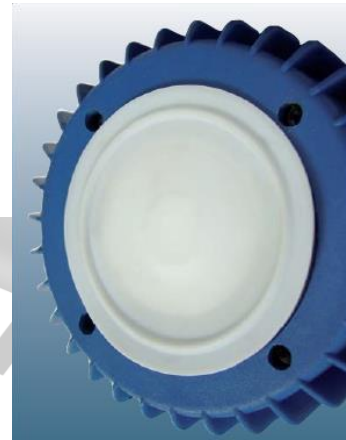
www.yamathosupply.com



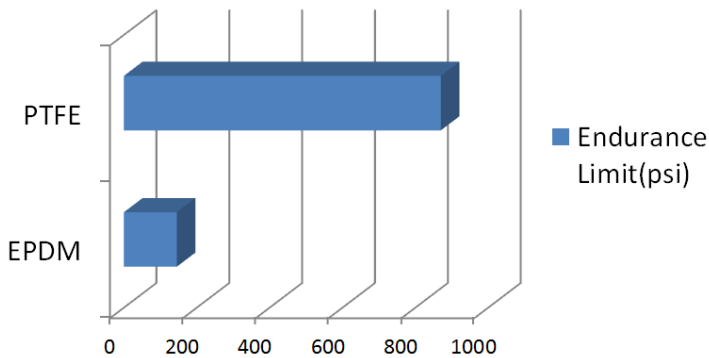
Metering Pumps

The right material

The TeknaEVO eliminates the need for frequent replacement of the diaphragm, effectively freeing time for higher value activities.



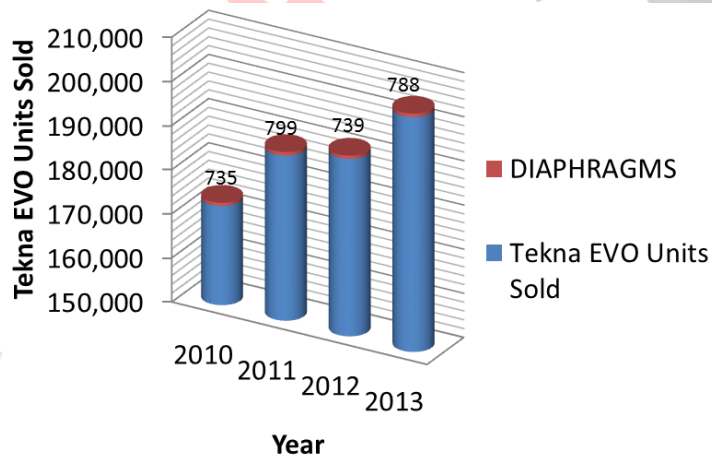
Endurance Limit(psi)



The endurance or fatigue limit σ_e is the stress amplitude which a smooth, unnotched sample will sustain without fracture for 10M cycles

Diaphragm made of solid PTFE with over 5 years tested life expectancy.

With 753K+ TeknaEVO pumps sold in the last 4 years and only 3,061 diaphragms



The right design



Seko's TeknaEVO pumps have been design to reduce the cost and time used to install, maintain and upgrade the pumps in the field. With only one shape and footprint, facing forward design, and enhanced diaphragm endurance, the TeknaEVO is ideal to optimize the service time and increase your productivity.

Yamatho Supply LLC



e-mail: sales@yamathosupply.com

Phone/fax: 610-365-7928

www.yamathosupply.com

Metering Pumps

CLEVER



603

800

803

5 models to cover from
0.4 to 54 lt/h
*all in the same
footprint*

COMPATIBLE:

Full Chemical
Compatibility



PVDF pump head and
ceramic ball valve
as standard

RELIABLE:

Reduced
Maintenance



Solid PTFE diaphragm
with a 5 years tested
working life

STEADY:

Dosing
Performances
Always Stable

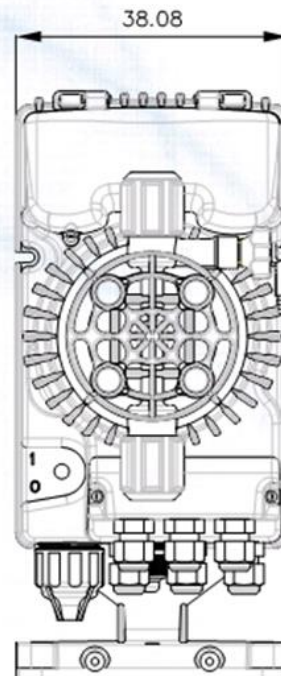
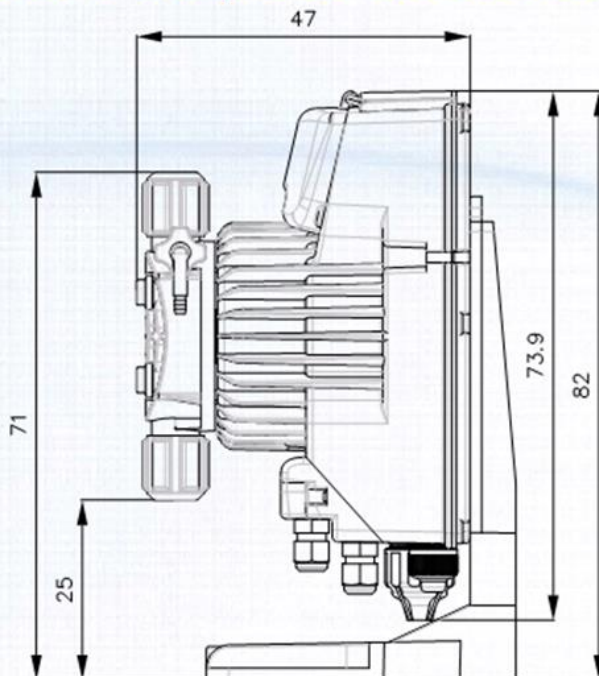
100-240 Vac
50-60 Hz

Stabilized
Multi
Power Supply



Stabilized Multi Power supply
100-240 Vac @ 50/60 Hz
with low current
consumption

Just one shape for *all models!*



Same case - different head

Yamatho Supply LLC



e-mail: sales@yamathosupply.com

Phone/fax: 610-365-7928

www.yamathosupply.com

Metering Pumps

Field 1	Field 2	Field 3	Field 4	Field 5	Field 6	Field 7
AKL	603	N	H	H	0	000

Version	Interface	Description
AKL	analog	Analog dosing pump with constant flow rate manually adjustable, 2 frequency range (/5), Power-ON led indicator and level control input.
APG		Analog dosing pump with constant flow rate manually adjustable, with proportional flow rate according to an external analog (4-20 mA) or digital signal (water meter); six position adjustable switch: three in division mode (n=1, 4, 10=n), one in multiplication mode (n=1), one for proportional 4-20 mA signal, one for constant function; pacing function adjustable by dip switch.

FIELD 1

TPG	digital	Digital dosing pump with constant flow rate manually adjustable, with proportional flow rate according to an external analog (4-20 mA) or digital signal (water meter); six position adjustable switch: three in division mode (n=1, 4, 10), one in multiplication mode (n=1), one for proportional 4-20 mA signal, one for constant function; pacing function adjustable by dip switch; Timer function; ppm proportional dosing; Statistics; Password; Input On-Off (remote control).
------------	----------------	--

FIELD 2

SEE THE CHOSEN MODEL AT THE FOLLOWING PAGES
--

FIELD 3

Power supply	N	100-240 VAC	50-60 Hz
---------------------	----------	-------------	----------

FIELD 4

Liquid end	Pump head	Connection	Diaphragm
H	PVDF		PTFE

FIELD 5

Installation kit

H	PVDF
----------	------

FIELD 6

Seals	0	FPM
	1	EPDM

FIELD 7

Customizations (000: standard version)

Yamatho Supply LLC



e-mail: sales@yamathosupply.com

Phone/fax: 610-365-7928

www.yamathosupply.com

Metering Pumps

COSTANT dosage with level control input

TeknaEVO AKL series

- Analog dosing pump with constant flow rate and analog interface.
- Flow rate manually adjustable by knob on the front panel, two frequency range (0÷20% - 0÷100%), Power-ON led indicator.
- Level control input.
- Manual priming valve
- **PTFE diaphragm. Standard pump head in PVDF and ceramic check valves balls.**
- Case made in PP reinforced with fiber glass. IP 65 rated.
- Complete standard installation kit composed by: PVDF foot filter and injection valve, PVC suction tube, PE discharge tube.
- Standard power supply: Multi-voltage 100-240 VAC 50-60 Hz.



Model	Pressure (psi)	Flow Rate (GPH)	Ø connection (in) int/ext	Max. frequency (spm)	Stroke capacity (ml/stroke)	Power Consumption (W)	Price List \$ (USD)
603	174	1.06	0.17"x1/4"	160	0.11	15.00	355.00
	145	1.32			0.14		
	116	1.59			0.17		
	29	2.11			0.22		
800	232	1.85	0.17"x1/4"	300	0.10	26.00	400.00
	145	2.64			0.15		
	72	3.96			0.22		
	15	4.76			0.26		
803	72	5.28	5/16"x7/16"	300	0.29	26.00	515.00
	58	6.61			0.37		
	29	10.57			0.59		
	15	14.27			0.79		



Yamatho Supply LLC



e-mail: sales@yamathosupply.com

Phone/fax: 610-365-7928

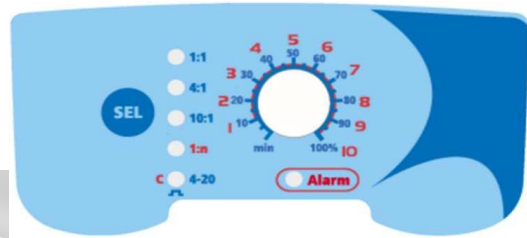
www.yamathosupply.com

Metering Pumps

PROPORTIONAL dosage

TeknaEVO APG series

- Constant flow rate manually adjustable, proportional flow rate according to an external analog (4-20 mA) or digital signal (water meter).
- Regulation knob (percentage and "n" value in multiplication mode); 6 position adjustable switch: 3 in division mode (1, 4, 10=n), in multiplication mode (n=1), 1 for proportional 4-20 mA signal, 1 for constant functionality; pacing function adjustable by dip switch.
- Level control input.
- Manual priming valve
- Easy access to electric connections protected by a lid.
- **PTFE diaphragm. Standard pump head in PVDF and ceramic check valves balls.**
- Case made in PP reinforced with fiber glass. IP 65 rated.
- Complete standard installation kit composed by: PVDF foot filter and injection valve, PVC suction tube, PE discharge tube.
- Standard power supply: Multi-voltage 100-240 VAC 50-60 Hz.



Model	Pressure (psi)	Flow Rate (GPH)	Ø connection (in) int/ext	Max. frequency	Stroke capacity	Power Consumption (W)	Price List \$
603	174	1.06	0.17"x1/4"	160	0.11	15.00	375.00
	145	1.32			0.14		
	116	1.59			0.17		
	29	2.11			0.22		
800	232	1.85	0.17"x1/4"	300	0.10	26.00	453.00
	145	2.64			0.15		
	72	3.96			0.22		
	15	4.76			0.26		
803	72	5.28	5/16"x7/16"	300	0.29	26.00	565.00
	58	6.61			0.37		
	29	10.57			0.59		
	15	14.27			0.79		

Yamatho Supply LLC



e-mail: sales@yamathosupply.com

Phone/fax: 610-365-7928

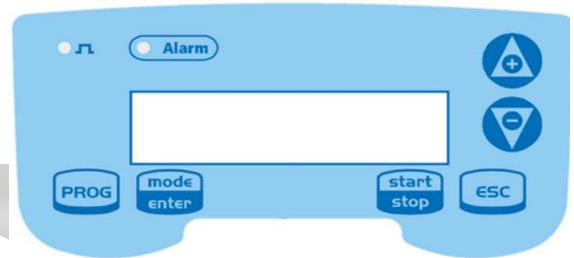
www.yamathosupply.com

Metering Pumps

PROPORTIONAL dosage with digital interface

TeknaEVO TPG series

- Digital interface version by APG model; Timer function; Ppm proportional dosing; Statistics; Password; Input On-Off (remote control). Constant flow rate manually adjustable, proportional flow rate according to an external analog (4-20 mA) or digital signal (water meter).
- Level control input.
- Manual priming valve
- Easy access to electric connections protected by a lid.
- **PTFE diaphragm. Standard pump head in PVDF and ceramic check valves balls.**
- Case made in PP reinforced with fiber glass. IP 65 rated.
- Complete standard installation kit composed by: PVDF foot filter and injection valve, PVC suction tube, PE discharge tube.
- Standard power supply: Multi-Voltage 100-240 VAC 50-60 Hz.



Model	Pressure (psi)	Flow Rate (GPH)	Ø connection (in) int/ext	Max. frequency	Stroke capacity	Power Consumption (W)	Price List \$
603	174	1.06	0.17"x1/4"	160	0.11	17.00	410.00
	145	1.32			0.14		
	116	1.59			0.17		
	29	2.11			0.22		
800	232	1.85	0.17"x1/4"	300	0.10	27.00	515.00
	145	2.64			0.15		
	72	3.96			0.22		
	15	4.76			0.26		
803	72	5.28	5/16"x7/16"	300	0.29	27.00	670.00
	58	6.61			0.37		
	29	10.57			0.59		
	15	14.27			0.79		



Yamatho Supply LLC



e-mail: sales@yamathosupply.com

Phone/fax: 610-365-7928

www.yamathosupply.com

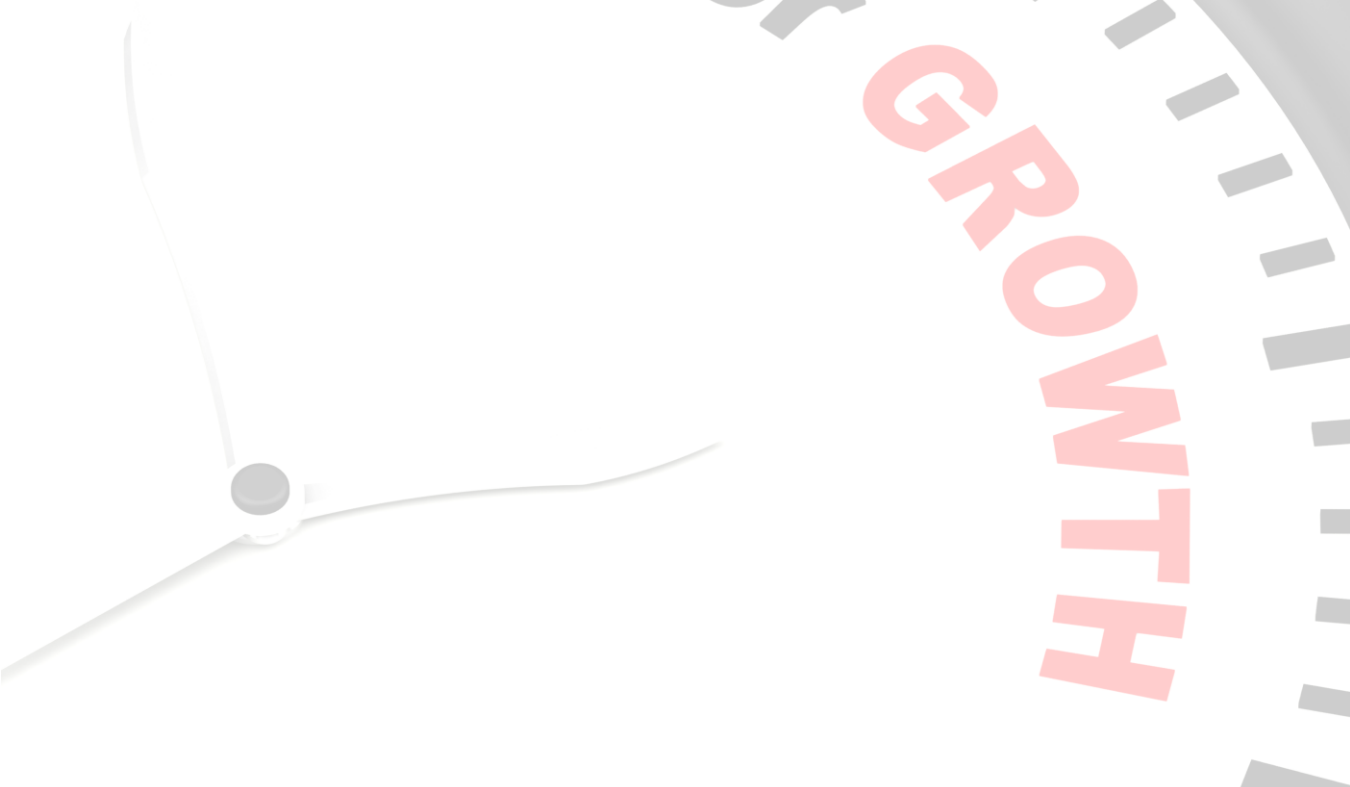
Metering Pumps

**Series
TC1**

Single-jet water meters with pulse sender, dry dial and roller reading.
Suitable for cold water up to 86°F (30°C).



	Standard Models 4 or 1 pulses/liter		Model # for 4 pulses/liter	Model # for 1 pulses/liter	List Price \$
	inches	mm			
Connection Size	1/2	13	WMT013C1D0	WMT013C1A0	84.00
	3/4	20	WMT020C1D0	WMT020C1A0	110.00
	1	25	WMT025C1D0	WMT025C1A0	175.00
	1 1/4	30	WMT030C1D0	WMT030C1A0	200.00
	1 1/2	40	WMT040C1D0	WMT040C1A0	320.00
	2	50	WMT050C1D0	WMT050C1A0	580.00



Yamatho Supply LLC



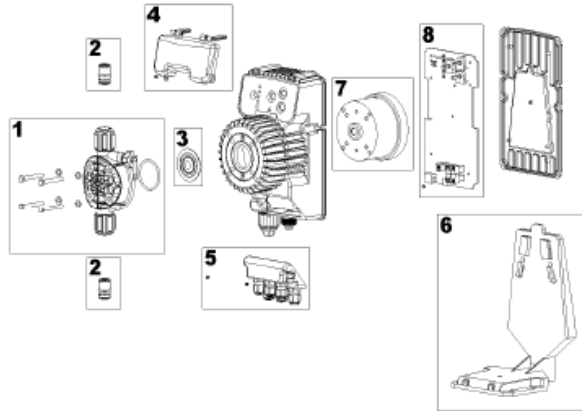
e-mail: sales@yamathosupply.com

Phone/fax: 610-365-7928

www.yamathosupply.com

Metering Pumps

SPARE PARTS Price List



Ref.	Description	603	800	803	Code	List Price (USD)
1	Complete pump head Made of PVDF, FPM seals, ceramic ball valves	•	•		EM99106571	160
				•	EM99106572	190

Complete Body Pump is composed by: Pump Head with valve, pipe holder, pipe clamp and ring nut + screws and washers + security diaphragm o-ring

Ref.	Description	603	800	803	Code	List Price (USD)
2	Valve Assembly PVDF/FPM/SC	•	•		EM99070105	110
				•	EM99070106	130
3	Diaphragm	•	•		EM00050012	20
				•	EM00050010	40
4	Front Panel Lid	•	•	•	EM99106496	10

Yamatho Supply LLC

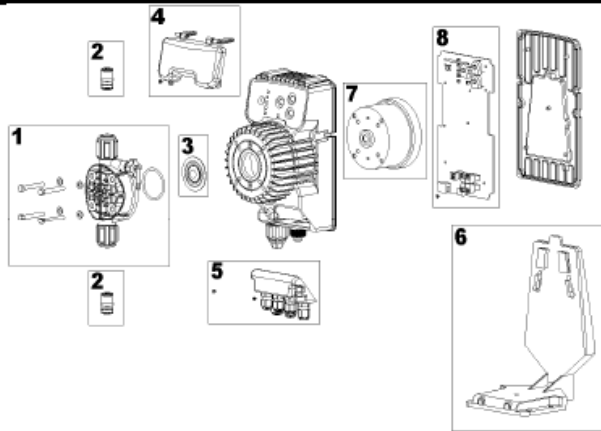


e-mail: sales@yamathosupply.com

Phone/fax: 610-365-7928 www.yamathosupply.com

Metering Pumps

SPARE PARTS



Ref.	Description	603	800	803	Code	List Price (USD)
5	Wiring Terminal TPG	•	•	•	EM99106497	20
6	Mounting Bracket	•	•	•	EM99106353	25
7	Complete solenoid	•			EM99054014	95
			•		EM99054015	145
				•	EM99054013	150
8	Analog circuit 100-240 VAC AKL	•			EM99106434	110
			•		EM99106435	115
				•	EM99106436	120
8	Digital circuit 100-240 VAC TPG	•			EM99106532	260
			•		EM99106533	270
				•	EM99106534	280

Yamatho Supply LLC



e-mail: sales@yamathosupply.com

Phone/fax: 610-365-7928

www.yamathosupply.com

Metering Pumps

SPARE PARTS

Description		603	800	803	Code	List Price (USD)
Foot filter kit (1 pcs)	PVDF/FPM	•	•		9900069084	50
				•	9900069109	
Injection Valve kit (1 pcs)	PVDF/FPM	•	•	•	EM99071082	70
					EM99071086	
Kit Fittings	PVDF	•	•		EM99106569	70
				•	EM99106570	100

Yamatho Supply LLC

e-mail: sales@yamathosupply.com

Phone/fax: 610-365-7928

www.yamathosupply.com



Metering Pumps

SPRING SERIES



Yamatho Supply LLC

e-mail: sales@yamathosupply.com

Phone/fax: 610-365-7928 www.yamathosupply.com



Metering Pumps

PS 1 SERIES

Piston Plunger Pumps

FEATURES

Capacity: from 0.4 to 80 GPH
 Max pressure: 290 psi
 Stroke rate: 58•78•116 strokes/minute
 Piston diameter: from 6 to 64 mm
 Motor: standard 0,18 and 0,25 Kw (IP55)
 Stroke length: 15 mm



MODEL	Strokes/ min	FLOW RATE GPH	MAX PRESSURE		CONNECTIONS		3phases Motor (kw)	Price USD	
			psi		SS 316	PVC		SS316	PVC
			SS 316	PVC					
PS1D006A	58	0.43							
PS1D006B	78	0.58	232	116	1/4 g f	1/4 g f	0,18	1,081	958
PS1D006C	116	0.87							
PS1D011A	58	1.45							
PS1D011B	78	1.89	232	116	1/4 g f	1/4 g f	0,18	1,081	958
PS1D011C	116	2.90							
PS1D017A	58	3.19							
PS1D017B	78	4.36	232	116	3/8 g f	3/8 g f	0,18	878	848
PS1D017C	116	6.39							
PS1D025A	58	7.26							
PS1D025B	78	9.30	232	116	3/8 g f	3/8 g f	0,18	888	875
PS1D025C	116	14.53							
PS1D030A	58	10.17							
PS1D030B	78	13.00	232	116	3/8 g f	3/8 g f	0,25	895	914
PS1D030C	116	20.34							
PS1D038A	58	15.98							
PS1D038B	78	21.21	197	116	3/8 g f	3/8 g f	0,25	904	923
PS1D038C	116	31.96							
PS1D048A	58	24.70							
PS1D048B	78	33.13	117	116	1/2 g f	1/2 g f	0,25	920	969
PS1D048C	116	49.40							
PS1D054A	58	31.97							
PS1D054B	78	42.14	92	92	1/2 g f	1/2 g f	0,25	1,206	1,160
PS1D054C	116	63.93							
PS1D064A	58	44.17							
PS1D064B	78	59.28	69	46	3/4 g f	3/4 g f	0,25	1,235	1,206
PS1D064C	116	88.35							

Yamatho Supply LLC



e-mail: sales@yamathosupply.com

Phone/fax: 610-365-7928 www.yamathosupply.com

Metering Pumps

PUMP HEAD MATERIALS

	STANDARD		ON REQUEST	
	21	31	24	34
PUMP HEAD	SS 316	PVC	SS 316	PVC
PISTON	SS 316	Ceramic	Ceramic	Ceramic
PISTON SEAL	FPM	FPM	EPDM	EPDM
VALVES	SS 316	Ceramic	SS 316	Ceramic
VALVE SEATS	SS 316	PVC	SS 316	PVC

LIQUID END

SS 316 or PVC pump head (standard).

SS 316 OR CERAMIC PISTON

The material in contact with the liquid to be dosed are listed in the "pump head materials" table (special materials may be supplied on request).

MAX DOSAGE TEMPERATURE

- SS 316 pump head: 194° F
- PVC pump head: 104° F

FLOW RATE ADJUSTMENT

Every pump can be equipped with an electric actuator which accepts a 4-20 mA.

P	S1	D	064	B	31	B1	000	LEGEND
								Optional
								Motor
								Pump head materials
								Strokes
								Plunger diameter
								Stroke length
								Mechanism type
								Model

MTH

Yamatho Supply LLC



e-mail: sales@yamathosupply.com

Phone/fax: 610-365-7928

www.yamathosupply.com

Metering Pumps

MS 1 SERIES Mechanical Diaphragm Pump

FEATURES

Capacity: from 0.4 to 158 GPH
 Max pressure: 116 psi
 Stroke rate: 58•78•116 strokes/minute
 Diaphragm diameter: from 64 to 165 mm
 Motor: standard 0,18 and
 0,25 Kw (IP55)
 Stroke length: 15 mm



MODEL	Strokes/ min	FLOW RATE GPH	MAX PRESSURE		CONNECTIONS		3phases Motor (kw)	Price USD		
			psi		SS 316	PVC		SS316	PP	PVC
			SS 316	PVC						
MS1A064A	58	1.74								
MS1A064B	78	2.56	116	116	1/4 g f	1/4 g f	0,18	1,168	813	1,022
MS1A064C	116	3.49								
MS1A094A	58	6.34						1,140	800	957
MS1A094B	78	8.24	116	116	3/8 g f	3/8 g f	0,18	1,168	800	1,022
MS1A094C	116	12.68						1,140	800	957
MS1B108A	58	19.00								
MS1B108B	78	25.36	116	116	3/8 g f	3/8 g f	0,18	1,273	830	990
MS1B108C	116	38.00								
MS1C138A	58	49.00			3/4 g f	3/4 g f		1,600	945	1,160
MS1C138B	78	69.75	80	80	3/4 g f	3/4 g f	0,18	1,600	945	1,160
MS1C138C	116	98.28			1 g f	1 g f		1,640	964	1,180
MS1C165A	58	72.92	58	58				1,734	980	1,267
MS1C165B	78	104.62	58	58	1 g f	1 g f	0,25	1,700	963	1,242
MS1C165C	116	158.52	35	35				1,700	963	1,242

Yamatho Supply LLC



e-mail: sales@yamathosupply.com

Phone/fax: 610-365-7928 www.yamathosupply.com

Metering Pumps

PUMP HEAD MATERIALS

	STANDARD		ON REQUEST	
	21	51	31	41
PUMP HEAD	SS 316	PP	PVC	PVDF
DIAPHRAGM	PTFE	PTFE	PTFE	PTFE
VALVES	SS 316	Ceramic	Ceramic	Ceramic
VALVE SEATS	SS 316	PVC	PVC	PVDF

LIQUID END

SS 316 or PP liquid end (standard).

PTFE DIAPHRAGM

The material in contact with the liquid to be dosed are

listed in the "pump head materials" table (special

materials may be supplied on request).

MAX DOSAGE TEMPERATURE

- SS 316 pump head: 104° F

- PP pump head: 104° F

FLOW RATE ADJUSTMENT

Every pump can be equipped with an electric actuator

which accepts a 4-20 mA.

M	S1	A	064	B	51	A1	000	LEGEND
								Optional
								Motor
								Pump Head Materials
								Strokes
								Diaphragm diameter
								Stroke length
								Mechanism Type
								Model



GROWTH

Yamatho Supply LLC



e-mail: sales@yamathosupply.com

Phone/fax: 610-365-7928

www.yamathosupply.com